



---

# The Fourth International Symposium of International Geoscience Programme IGCP Project 608



*“Cretaceous Ecosystems and Their Responses to  
Paleoenvironmental Changes in Asia and the Western Pacific”*

August 15–20, 2016, Novosibirsk, Russia

**Third (Final) Circular and Program**



IPGG  
SB RAS



RUSSIAN NATIONAL COMMITTEE  
FOR INTERNATIONAL  
GEOSCIENCE PROGRAMME (IGCP)

---

## INVITATION & AIMS

---

We cordially invite you to participate in the 4th International Symposium of IGCP608, which will be held from August 15 to 20, 2016 in Trofimuk Institute of Petroleum Geology and Geophysics of Siberian Branch of Russian Academy of Sciences, Novosibirsk (Russia).

The mechanisms underlying the evolution of the Asia-Pacific Cretaceous ecosystems are far from being fully understood. The IGCP608 project is aimed to reconstruct the Cretaceous ecosystems and the history of their responses to paleoenvironmental changes in Asia and the Western Pacific. The Symposium will serve as a platform for participants to share their views on the paleoenvironmental changes impacts both on terrestrial and marine ecosystems. The scientific program will cover a wide range of topics including paleoclimate, paleogeography, paleontology, stratigraphy, tectonics, and petroleum geology.

The symposium is dedicated to the 105th anniversary of the birth of Corresponding Member of the USSR Academy of Sciences, Professor Vladimir N. Saks (1911–1979), Soviet geologist and paleontologist, and the founding father of the Mesozoic paleontology and stratigraphy Research Group in Novosibirsk Academy Town.

The 4th International Symposium of the IGCP608 in Novosibirsk will provide an opportunity for discussion of the latest advances in studies of Asia-Pacific Cretaceous ecosystems. In addition to scientific sessions, the post-symposium field excursion will be organized in Kemerovo Oblast to examine the non-marine Cretaceous deposits yielding dinosaurs and other vertebrates.

## SCHEDULE

---

Sunday, August 14, 2016 – Arrival of participants.

Monday, August 15, 2016 – Registration, opening ceremony, scientific sessions, excursion to the Central Siberian Geological Museum, welcome party.

Tuesday, August 16, 2016 – Scientific sessions, excursion to the Novosibirsk Zoo, conference dinner.

Wednesday, August 17, 2016 – Scientific sessions, business meeting, excursion to the Archaeology and Ethnography Museum.

Thursday to Saturday, August 18–20, 2016 – Post-symposium field excursion "Cretaceous dinosaur-bearing deposits in Kemerovo Oblast".

Sunday, August 21, 2016 – Departure of participants.

## GENERAL INFORMATION

---

### Venue

The Symposium and scientific sessions will be held at Trofimuk Institute of Petroleum Geology and Geophysics of Siberian Branch of Russian Academy of Sciences, Novosibirsk Academy Town, Russia.

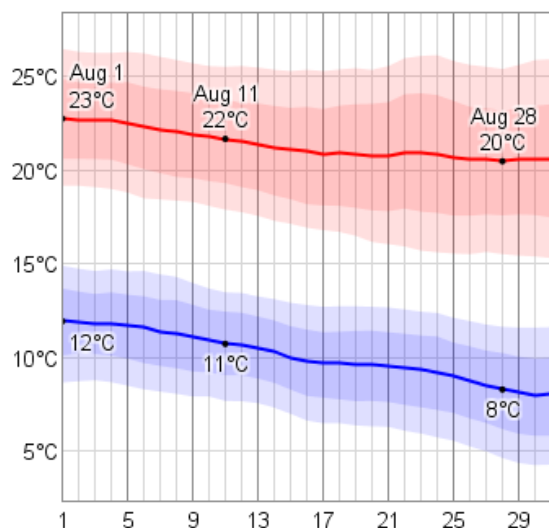
Academician Koptug av., 3.

Website: <http://www.ipgg.sbras.ru/en>



### Weather in August in Novosibirsk and Kemerovo

The weather during August in Novosibirsk and Kemerovo is enough warm and humid. Occasional rain shower is possible at any time. Therefore, hat and other sun protection things are strongly recommended for all participants, and we recommend light cotton clothing and umbrella. August is still bathing season, you can swim in the so-called 'Ob Sea' (Novosibirsk Reservoir created on the Ob River) and rivers (during field excursion); so you can take the swimwear.



August is commonly characterized by gradually falling daily temperatures, with daily highs ranging from 20 to 23°C over the course of the month, exceeding 26°C or dropping below 15°C only one day in ten.

Daily low (night) temperatures range from 8 to 12°C, falling below 4°C or exceeding 15°C only one day in ten.

**Daily high and low temperature in August**

## Registration desk

Registration desk will be located at the Conference Hall Entrance (between second and third floor) in Trofimuk Institute of Petroleum Geology and Geophysics of Siberian Branch of RAS during the first day of the symposium (15 August).

Participants should pay registration fees at the registration desk. We accept only cashes. Credit cards are NOT acceptable.

## Registration fees

Event	Fee per person
<b>Technical sessions</b> (including admission fee, abstract volume, refreshments, lunches, welcome dinner and other social events)	Regular participant: US\$ 300 Student: US\$ 150
<b>Post-symposium field excursion</b> (including excursion guidebook, accommodation, meals, refreshments, and transportation during the excursion)	US\$ 300

## TRAVEL INFORMATION

---

**Novosibirsk International Airport** (Tolmachevo) is one of the most dynamically developing airports with the federal status, the largest transit hub beyond the Ural mountains on the major routes connecting Europe and Asia. The geographical position of Novosibirsk International Airport allows it to serve prospective cross-polar routes connecting North America and Asia.

Tolmachevo Airport website: <http://eng.tolmachevo.ru/airport/info>

**Novosibirsk Railway station:** Novosibirsk-Glavny is the primary passenger railway station for the city of Novosibirsk in Russia, and an important stop along the Trans-Siberian Railway. The station is one of the largest in Russia.

Russian Railways website: <http://eng.rzd.ru/>

- ✚ If you wish to have an airport pick up and escorted assistance in order to reach the hotel, please contact us by e-mail ([igcp608.2016@gmail.com](mailto:igcp608.2016@gmail.com)).
- ✚ Please provide the following information upon requesting airport pick up and taking back assistance: (1) date and time of arrival, (2) arrival flight No., (3) date and time of departure, and (4) departure flight No.

## ACCOMMODATION AND RATES

The Organizing Committee has arranged for special rates for Symposium participants at the Hotel "Golden Valley" and the Novosibirsk State University Hostel.

### *Hotel "Golden Valley"* (rates per person per night)

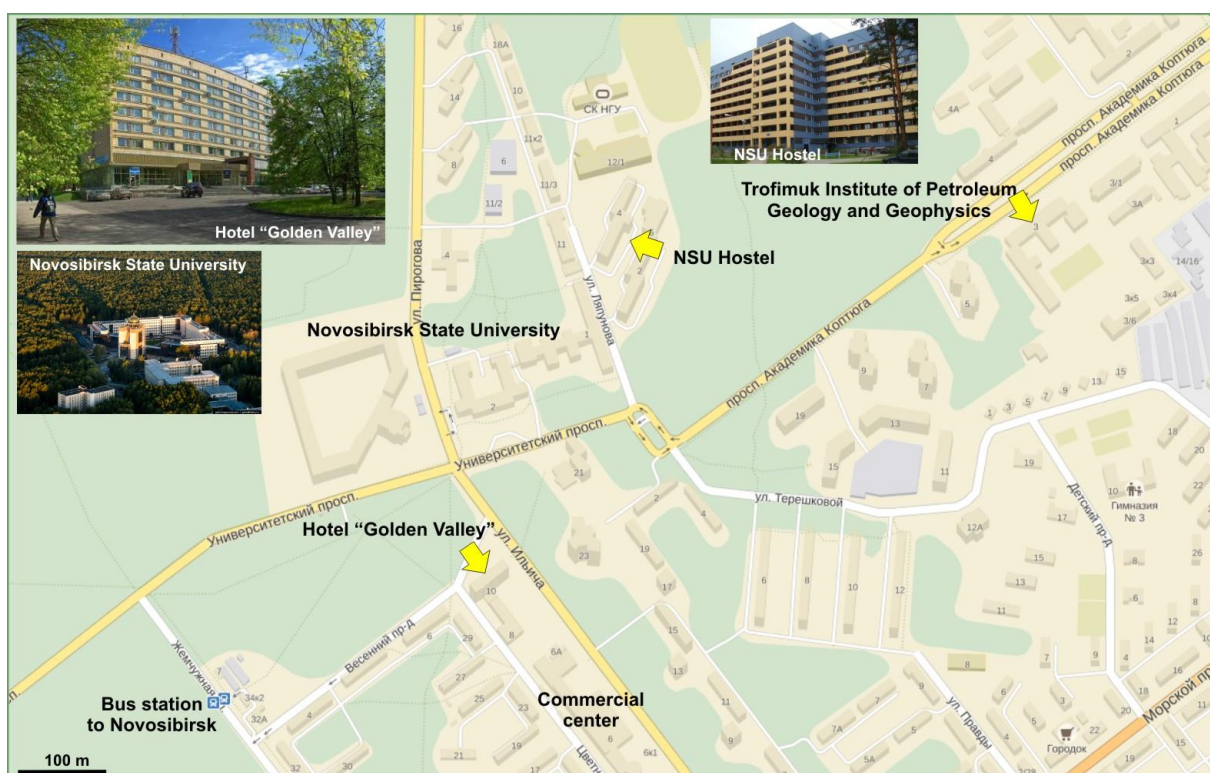
Type of room	For participants, working in Russian Academy of Science	For other Symposium participants
1 <sup>st</sup> category Single room	650 RUB	2300 RUB
1 <sup>st</sup> category Double room	1100/550 RUB	2800/1400 RUB
Suite Double room	3600/1800 RUB	3700/1850 RUB
Apartments	5800 RUB	5800 RUB

These rates do not include breakfast. If you need breakfast at the hotel, you should pay 300 RUB (per day) at the hotel reception.

### *Novosibirsk State University Hostel (NSU Hostel)*

There is also a possibility of accommodation in the new NSU hostel (Lyapunov str., 4), which was built in 2010. Rates: 600 RUB per person, per night.

You cannot ask breakfast in campus hostel.





## SYMPOSIUM SESSIONS

---

### Topic Sessions

1. Biodiversity of terrestrial and marine ecosystems. Cretaceous fauna and flora of Asian and Western Pacific
2. Cretaceous paleogeography and paleobiogeography
3. Cretaceous climate and environmental changes
4. Cretaceous stratigraphy and sedimentology
5. Cretaceous vertebrates of Asia and Western Pacific

### Language of the symposium

The official language of the symposium is English.

### Guidelines for oral presentation

Authors are kindly asked to submit their PowerPoint file at the registration desk not later than their actual time block of the session.

The time allocated to each oral presentation will be 15 minutes, plus 5 minutes for questions (max 20 minutes).

Note: The conference room is equipped with a computer with PowerPoint and laser pointer. Please provide ppt or pptx format files. If you wish to use alternative files, such as a video file embedded in your ppt(x), please make sure that these files work properly and are available for transfer; it is under the presenter's responsibility.

### Guidelines for poster presentation

Poster boards are about 120 cm (width) x 85 cm (height). Posters are recommended to be prepared in A0 size (84.1x118.9 cm) and no larger than 110 cm (width) x 150 cm (height).

Poster boards will be located in the conference hall.

Note: posters can be placed in any day of scientific sessions before Poster Session (see Symposium Program).

# Program

## Monday, August 15, 2016

08:30-10:00 **Registration** (Conference Hall Entrance)

### Opening Session

*Chairpersons:* Hisao Ando, Boris N. Shurygin

10:00-10:10 **Welcome speech** Prof. Alexey E. Kontorovich, RAS Academician  
(Scientific Supervisor of the Trofimuk Institute of  
Petroleum Geology and Geophysics SB RAS)

10:10-10:30 **Opening address** Prof. Hisao Ando  
(IGCP608 Project Leader)

10:30-10:45 **Special talk** Prof. Alexey E. Kontorovich  
Vladimir N. Saks: ideas on petroleum prospectivity of Cretaceous  
sediments in Siberian sedimentary basins

10:45-11:00 **Special talk** Prof. Victor A. Zakharov, Prof. Boris N. Shurygin\*  
Vladimir N. Saks: geologist and paleontologist, and the founding father  
of the Mesozoic paleontology and stratigraphy Research Group in  
Novosibirsk Academy Town

11:00-11:30 **Group Photo & Coffee Break**

### Session 1

#### **Biodiversity of terrestrial and marine ecosystems. Cretaceous fauna and flora of Asian and Western Pacific**

*Chairpersons:* Jingeng Sha, Galina L. Kirillova

11:30-11:50 **The composition and dynamics of the Late Cretaceous and Paleocene  
Arctic plant communities**  
Alexei B. Herman\* (Geological Institute, Moscow) and Robert A. Spicer  
(The Open University, Milton Keynes)

11:50-12:10 **The mid-Cretaceous swamp plant communities of northeastern Asia**  
Valentina S. Markevich, Eugenia V. Bugdaeva\*, Tatyana A. Kovaleva,  
Elena B. Volynets, and Maxim A. Afonin (Institute of Biology and Soil  
Sciences, Vladivostok)

12:10-12:30 **First flowering plants in Primorye region (Russia)**  
Elena B. Volynets\*, Eugenia V. Bugdaeva, Valentina S. Markevich, and  
Tatyana A. Kovaleva (Institute of Biology and Soil Sciences, Vladivostok)

12:30-14:00 **Lunch**

14:00-14:40 **Excursion to the Central Siberian Geological Museum**

*Chairpersons:* Bandana Samant, Alexei B. Herman

14:40-15:00 **Conifer fossils from the Lower Cretaceous of Inner Mongolia, North China and their geologic significance**  
Bainian Sun\*, Xiaohui Xu, Defei Yan, and Peihong Jin (Lanzhou University)

15:00-15:20 **The change of the Early Cretaceous ecosystems of Gusinozerskiy Basin (the Buryat Republic)**  
Eugenia V. Bugdaeva\* and Valentina S. Markevich (Institute of Biology and Soil Science, Vladivostok)

15:20-15:40 **Late Jurassic to Early Cretaceous oysters (Bivalvia, Ostreoidea) from Siberia: taxonomy, palaeoecology, distribution and variations of carbon and oxygen isotopes**  
Igor N. Kosenko (Novosibirsk State University)

15:40-16:00 **Taxonomy and morphological diversity of infructescences co-occurred with *Trochodendroides* leaves**  
Lina B. Golovneva\* and Pavel I. Alekseev (Komarov Botanical institute, St. Petersburg)

16:00-16:20 **Coffee Break**

## Session 2

### Cretaceous paleogeography and paleobiogeography

*Chairpersons:* Ren Hirayama, Ichinnorov Niiden

16:20-16:40 **Palaeobiogeographic implications of the Late Aptian–Albian polyconitid rudist fauna**  
Jingeng Sha\* (Nanjing Institute of Geology and Palaeontology) and  
Riccardo Cestari (G. d'Annunzio University, Chieti)

16:40-17:00 **The discovery of the CORB in the Southern Tethyan Himalaya and its paleogeographic implication**  
Guobiao Li\*, Zichen Han, Xinfu Li, Xiaolu Niu, Tianyang Wang, Yi Han, Youjia Yao, Beibei Lv, and Wen Yuan Zhang (China University of Geosciences, Beijing)



- 17:00-17:20 **Late Cretaceous paleobiogeography of Peninsular India: An overview of constraints from fossil tetrapods**  
Sunil Bajpai (Birbal Sahni Institute of Palaeosciences, Lucknow)
- 17:20-17:40 **Terminal Maastrichtian–Danian marine incursion in Central India: Myth or Reality?**  
Syed A. Jafar (National Centre for Antarctic and Ocean Research, Vasco-da-Gama)
- 18:30-21:00 **Welcome party**

**Tuesday, August 16, 2016**

### **Session 3**

#### **Cretaceous climate and environmental changes**

*Chairpersons:* Guobiao Li, Eugenia V. Bugdaeva

- 09:00-09:20 **Environmental changes in Early Cretaceous palaeobasin of Western Siberia based on marine and terrestrial palynomorphs**  
Ekaterina B. Pestchevitskaya (Trofimuk Institute of Petroleum Geology and Geophysics, Novosibirsk)
- 09:20-09:40 **Palaeoenvironmental changes in the Early Cretaceous of Gydan region (NW Siberia)**  
Ekaterina B. Pestchevitskaya\*, O.D. Nikolenko, L.G. Vakulenko, S.V. Ershov, and P.A. Yan (Trofimuk Institute of Petroleum Geology and Geophysics, Novosibirsk)
- 09:40-10:00 **Palynomorphs and biofacies in the Upper Cretaceous sediments of northern Siberia**  
Natalia K. Lebedeva (Trofimuk Institute of Petroleum Geology and Geophysics, Novosibirsk)
- 10:00-10:20 **Cretaceous paleoenvironments of the Russian southeast**  
Galina L. Kirillova\* and Svetlana A. Medvedeva (Kosygin Institute of Tectonics and Geophysics, Khabarovsk)
- 10:20-10:40 **Assessing effects of Deccan volcanism on biota and environments of non-marine Maastrichtian–Palaeogene sediments of Central India**  
Dhananjay M. Mohabey\* and Bandana Samant (RTM Nagpur University)

10:40-11:00 **Palynological study of intertrappean sediments in the central and eastern parts of Deccan volcanic province of India to understand age and depositional environment**  
Bandana Samant\*, Deepesh Yadav, and Dhananjay M. Mohabey (RTM Nagpur University)

11:00-11:20 **Coffee Break**

## **Session 4**

### **Cretaceous stratigraphy and sedimentology**

*Chairpersons:* Sunil Bajpai, Natalia K. Lebedeva

11:20-11:40 **Chronostratigraphy of the Jurassic–Cretaceous lacustrine deposits in southeast Mongolia: Brief results of Japan-Mongolia Joint research project**

Hisao Ando\* (Ibaraki University), H. Hasegawa (Nagoya University), Ichinnorov N. (Paleontological Center, Ulaanbaatar), N. Hasebe (Kanazawa University, Ishikawa), T. Ohta (Waseda University, Tokyo), T. Hasegawa (Kanazawa University, Ishikawa), M. Yamamoto (Hokkaido University, Sapporo), G.B. Li (Nanjing Institutes of Geology and Palaeontology), Erdenetsogt B. (National University of Mongolia, Ulaanbaatar), and U. Heimhofer (Leibniz University Hannover)

11:40-12:00 **The Jurassic–Cretaceous boundary in the Asian part of Russia**

Oksana S. Dzyuba\* and Boris N. Shurygin (Trofimuk Institute of Petroleum Geology and Geophysics, Novosibirsk)

12:00-12:20 **Stratigraphy of Jurassic–Cretaceous Rocks of Thung Yai–Khlong Thom area, Peninsular Thailand**

Naramase Teerarungsikul (Department of Mineral Resources, Bangkok)

12:20-12:40 **Supersequences in the Upper Jurassic and Lower Cretaceous of Western Siberia**

Alexander L. Beisel (Trofimuk Institute of Petroleum Geology and Geophysics, Novosibirsk)

12:40-14:00 **Lunch**

*Chairpersons:* Bainian Sun, Ekaterina B. Pestchevitskaya

14:00-14:20 **Lower Cretaceous formations and palynology of the Matad area (Tamsag Basin), southeastern Mongolia**

Ichinnorov Niiden\* (Institute of Paleontology and Geology, Ulaanbaatar), Christa-Ch. Hofmann (University of Vienna), Hitoshi Hasegawa (Nagoya University), and Uranbileg Luvsantseden (Institute of Paleontology and Geology, Ulaanbaatar)

- 14:20-14:40 **Environments of conservation of the dinosaurs in the Mesozoic deposits of south-eastern West Siberia (Shestakovskii Yar section)**  
Olga N. Zlobina (Trofimuk Institute of Petroleum Geology and Geophysics, Novosibirsk)
- 14:40-15:00 **Palynology and magnetostratigraphy of Deccan volcanic associated sedimentary sequence of Amarkantak Group in Central India: Age and paleoenvironment**  
Deepali Thakre\*, Bandana Samant, and Dhananjay M. Mohabey (RTM Nagpur University)
- 15:00-15:20 **The closing age of Himalayan Tethys: New evidence from planktic foraminifera**  
Guobiao Li (China University of Geosciences, Beijing)
- 16:30-18:30 **Excursion to the Novosibirsk Zoo**
- 19:00-21:00 **Conference dinner**

## **Wednesday, August 17, 2016**

### **Session 5 Cretaceous vertebrates of Asia and Western Pacific**

*Chairpersons:* Dhananjay M. Mohabey, Lina B. Golovneva

- 09:00-09:20 **Lithostratigraphy and biota of the Late Cretaceous dinosaur bearing Lameta and Intertrappean sediments along Salbardi fault in Betul and Amravati districts of Central India**  
Hemant Sonkusare\*, Bandana Samant, and Dhananjay M. Mohabey (RTM Nagpur University)
- 09:20-09:40 **Fossil vertebrates from the Late Cretaceous Tamagawa Formation (Turonian) of Kuji City, Iwate Prefecture, northeastern Japan**  
Ren Hirayama\* (Waseda University, Tokyo), T. Takisawa (Kuji Amber Museum), K. Sasaki (Kuji City Office), T. Sonoda (Fukui Prefectural Dinosaur Museum, Katsuyama), M. Yoshida, A. Takekawa (the University of Tokyo), Sh. Mitsuzuka (Nippon Koei Co., Ltd., Shizuoka), Y. Kobayashi (Hokkaido University, Sapporo), T. Tsuihiji (the University of Tokyo), R. Matsumoto (Kanagawa Prefectural Museum of Natural History, Odawara), M. Kurosu (China University of Geosciences, Beijing), Y. Takakuwa (Gunma Museum of Natural History, Tomioka), S. Miyata (Josai University, Tokyo), and Y. Tsutsumi (National Museum of Nature and Science, Tsukuba)

- 09:40-10:00 **Late Cretaceous (Maastrichtian) vertebrate fossils from inland basins of Indian Peninsula – their palaeogeographic significance**  
Arun Bhadran (Geological Survey of India, Kolkata)
- 10:00-10:20 **Stable isotope composition of modern and fossil archosaur eggshells as a tracer of animal ecology, living environment and reproductive strategy**  
Romain Amiot\*, Nicolas Lazzerini, Christophe Lécuyer, and François Fourel (Université Claude Bernard Lyon 1 and Ecole Normale Supérieure de Lyon)

**10:20-10:40 Coffee Break**

*Chairpersons:* Romain Amiot, Oksana S. Dzyuba

- 10:40-11:00 **Early Cretaceous fossil sites in Kalasin Province, Thailand**  
Orn-uma Summart\*, Kamonlak Wongko, and Phornphen Chantasit (Department of Mineral Resource, Bangkok)
- 11:00-11:20 **Historical stages of natural science collection formation in Kemerovo Regional Museum**  
Olga A. Feofanova (Kemerovo Regional Museum)
- 11:20-11:40 **The history of discovery and research of the Shestakovo locality of Early Cretaceous vertebrates**  
Alexander E. Kostyunin (Kemerovo Regional Museum)
- 11:40-12:00 **Results of paleontological excavations 2014–2015 held by Kemerovo Regional Museum at the Early Cretaceous Shestakovo vertebrate localities**  
Natalia V. Demidenko\* (Kemerovo Regional Museum) and Eugene N. Maschenko (Borissiak Paleontological Institute, Moscow)

## **Poster Session**

12:00-12:40

**Fossil woods from the Bykov Formation (Late Cenomanian–Early Campanian) of Sakhalin Island, Russian Far East**

Maxim A. Afonin (Institute of Biology and Soil Science, Vladivostok)

**The Lower Cretaceous continental vertebrate fauna from Shestakovo locality (West Siberia): Results of 20-year research**

Stepan V. Ivantsov, Aleksey V. Fayngerts, Sergey V. Leshchinskiy (Tomsk State University), Anton S. Rezviy (Museum of Nature and Man, Khanty-Mansiysk), Pavel P. Skutschas, and Aleksandr O. Averianov (Tomsk State University)

**Ryazanian (Boreal Berriasian) ammonite succession of the Nordvik section (Russian Arctic): Revision and new data**

Alexander E. Igolnikov (Trofimuk Institute of Petroleum Geology and Geophysics, Novosibirsk), Mikhail A. Rogov (Geological Institute, Moscow), and Alexandr S. Alifirov (Trofimuk Institute of Petroleum Geology and Geophysics, Novosibirsk)

**Reinvestigation of an Early Cretaceous eutherian mammal *Endotherium niinomii***

Nao Kusuhashi (Ehime University), Yuan-qing Wang, and Chuan-kui Li (Institute of Vertebrate Paleontology and Paleoanthropology, Beijing)

**The Cretaceous flora of Mongolia and its paleoenvironment**

Uranbileg Luvsantseden, Ichinnorov Niiden (Institute of Paleontology and Geology, Ulaanbaatar), and Eviikhuu Adiya (Uyan Geo Resource LLC, Ulaanbaatar)

**The neuropteran assemblage (Insecta) of the mid-Cretaceous Burmese amber confirms transitional character of its biota**

Vladimir N. Makarkin (Institute of Biology and Soil Science, Vladivostok)

**Upper Cretaceous palynology (spores, pollen and dinoflagellate cysts) of the Yakovlevskaya-2 borehole, Ust-Yenisei region**

Irina V. Smokotina (AC "Siberian PGO", Krasnoyarsk)

**Bio- and lithostratigraphy of the Jurassic–Cretaceous boundary deposits in the Komsomolsk section (Russian Far East)**

Olga S. Urman, Oksana S. Dzyuba, Boris N. Shurygin (Trofimuk Institute of Petroleum Geology and Geophysics, Novosibirsk), and Galina L. Kirillova (Kosygin Institute of Tectonics and Geophysics, Khabarovsk)

**Discontinuous euxinia during the early Aptian oceanic anoxic event (OAE 1a): A case study from the Russian Platform**

Svetlana O. Zorina and Oksana V. Pavlova (Kazan Federal University)

12:40-14:00 **Lunch**

**Closing Session and IGCP608 business meeting**

*Chairperson:* Hisao Ando

14:00-14:20 **Results of previous stages of researches under the IGCP608 and the detailed project plan to be undertaken over the next year (2017)**

Hisao Ando

14:20-14:40 **Introduction of the Fifth International Symposium of IGCP608 in Korea**

Hisao Ando

14:40-14:50 **Statistical data on the Fourth International Symposium of IGCP608**

Boris N. Shurygin

15:00-16:30 **Excursion to the Archaeology and Ethnography Museum**



## POST-SYMPOSIUM FIELD EXCURSION

---

### "Cretaceous dinosaur-bearing deposits in Kemerovo Oblast"

guided by Olga A. Feofanova, Natalia V. Demidenko, Natalia K. Lebedeva  
and Petr A. Yan

#### Day 1 (Thursday, August 18)

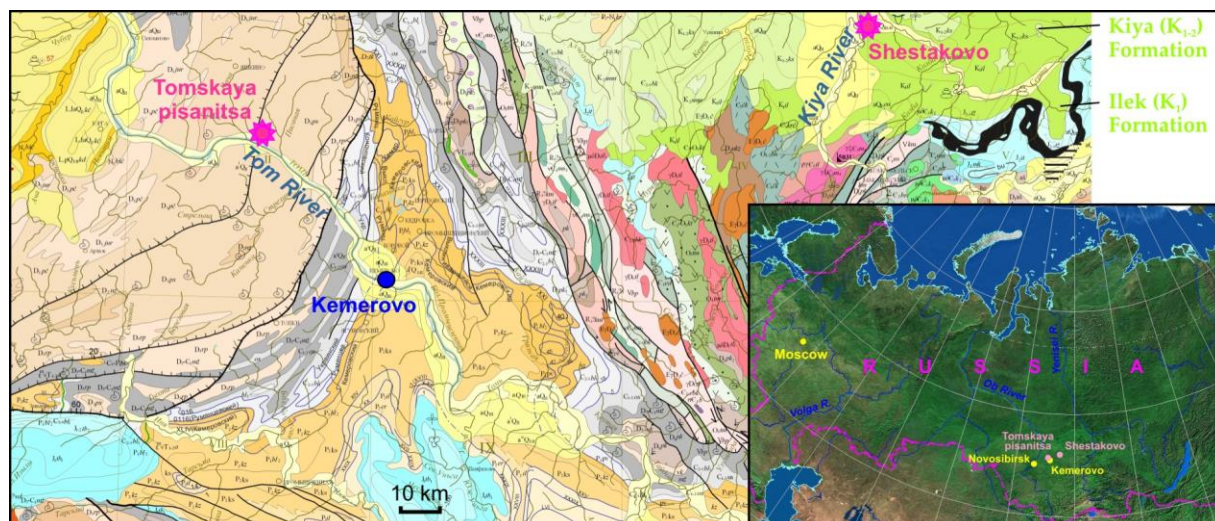
- 9:00 Departure from Novosibirsk, meeting point: entry Hotel "Golden Valley"
- 14:00 Arrival at Kemerovo
- 16:00-18:00 Visiting the Kemerovo Regional Museum of Local Lore
- Stay at Hotel Kuzbass

#### Day 2 (Friday, August 19)

- 9:00-19:00 Visiting the Lower Cretaceous dinosaur localities near the village of Shestakovo in Kemerovo Oblast
- Stay at Hotel Kuzbass

#### Day 3 (Saturday, August 20)

- 9:00 Leaving Hotel Kuzbass in Kemerovo
- 10:00-14:00 Visiting the "Tomskaya pisanitsa" (historical cultural and natural museum-preserve)
- 18:00 Arrival at Novosibirsk, entry Hotel "Golden Valley"





## EXECUTIVES AND ORGANIZING COMMITTEE

---

### *IGCP 608 Project Leaders*

Prof. Hisao Ando (Leader)

Department of Earth Sciences, Ibaraki University, Japan

Prof. Xiaoqiao Wan (Co-Leader)

School of Geosciences and Resources, China University of Geosciences, China

Prof. Daekyo, Cheong (Co-Leader)

Department of Geology, College of Natural Sciences, Kangwon National University, Korea

Prof. Sunil Bajpai (Co-Leader)

Birbal Sahni Institute of Palaeobotany, Lucknow, India

### *Organizing Committee of the Fourth International Symposium of IGCP608*

RAS Academician, Prof. Alexey E. Kontorovich (Honorary Chairman)

Trofimuk Institute of Petroleum Geology and Geophysics (IPGG) SB RAS,  
Novosibirsk State University (NSU)

RAS Corresponding Member Vladimir I. Klishin (Honorary Chairman)

Coal Institute of the Federal Coal and Coal Chemistry Research Center SB RAS

RAS Corresponding Member, Prof. Valeriy A. Vernikovskiy (Honorary Chairman)

IPGG SB RAS, NSU

RAS Corresponding Member, Prof. Boris N. Shurygin (Co-chairman)

IPGG SB RAS, NSU

Dr. Galina L. Kirillova (Co-chairman)

Kosygin Institute of Tectonics and Geophysics FEB RAS

Dr. Oksana S. Dzyuba (Vice-chairman)

IPGG SB RAS

Dr. Natalya K. Lebedeva (Vice-chairman)

IPGG SB RAS, NSU

Dr. Ekaterina B. Pestchevitskaya (Vice-chairman)

IPGG SB RAS

Olga A. Feofanova (Vice-chairman)

Director of the SCI "Kemerovo Regional Museum of Local Lore"

Igor N. Kosenko (Symposium Secretary)

IPGG SB RAS, NSU

Dr. Alexandr S. Alifirov, IPGG SB RAS, NSU

Dr. Alexander L. Beisel, IPGG SB RAS

Dr. Larisa A. Glinskikh, IPGG SB RAS

Dr. Anna A. Goryacheva, IPGG SB RAS

Dr. Irina V. Khazina, IPGG SB RAS

Dr. Olga B. Kuzmina, IPGG SB RAS

Dr. Boris L. Nikitenko, IPGG SB RAS

Dr. Petr A. Yan, IPGG SB RAS

Clémentine Colpaert, NSU

Natalya V. Demidenko, SCI "Kemerovo Regional Museum of Local Lore"

Alexander E. Igolnikov, IPGG SB RAS, NSU

Svetlana N. Khafaeva, IPGG SB RAS  
Anna N. Trubicyna, IPGG SB RAS  
Olga S. Urman, IPGG SB RAS

### *Co-Organizing Agency*

Trofimuk Institute of Petroleum Geology and Geophysics SB RAS  
Novosibirsk State University  
State Cultural Institution "Kemerovo Regional Museum of Local Lore"  
Coal Institute of the Federal Coal and Coal Chemistry Research Center SB RAS  
Cretaceous Commission of the Interdepartmental Stratigraphic Committee of Russia  
Russian National Committee for International Geoscience Programme

### *Sponsors*

UNESCO-IUGS-IGCP Committee  
Russian Foundation for Basic Researches (RFBR project 16-05-20508)  
INPEX Corporation Co., Ltd. (Japan)  
Japan Petroleum Exploration Co., Ltd. (Japan)  
JX Nippon Oil & Energy Corporation Co., Ltd. (Japan)  
Mitsui Oil Exploration Co., Ltd. (Japan)  
Mitsubishi Corporation Exploration Co., Ltd. (Japan)  
Oyo Corporation Co., Ltd. (Japan)  
DIA Consultants Co., Ltd. (Japan)  
Chuo Kaihatsu Co., Ltd. (Japan)

## CONTACTS

---

In case of any questions please contact the Secretary of Organizing Committee:

### **Igor N. Kosenko (Symposium Secretary)**

Trofimuk Institute of Petroleum Geology and Geophysics SB RAS  
Academician Koptug av., 3, Novosibirsk 630090, Russia  
Tel: +73833332306 Fax: +73833332301  
E-mail: [igcp608.2016@gmail.com](mailto:igcp608.2016@gmail.com)

We are happy to answer any questions and discuss any concerns you may have:

### **Dr. Oksana S. Dzyuba (Technical Program and Publication Coordinator)**

E-mail: [dzyubaos@ipgg.sbras.ru](mailto:dzyubaos@ipgg.sbras.ru)

### **Dr. Natalya K. Lebedeva (Field Trip Coordinator)**

E-mail: [lebedevank@ipgg.sbras.ru](mailto:lebedevank@ipgg.sbras.ru)

### **Dr. Ekaterina B. Pestchevitskaya (Venue and Social Events Coordinator)**

E-mail: [peschevickayaeb@ipgg.sbras.ru](mailto:peschevickayaeb@ipgg.sbras.ru)

All up-to-date information will be provided on <http://igcp608.sci.ibaraki.ac.jp/>